

LES EPANCHEMENTS PLEURAUX DE GRANDE ABONDANCE

Intérêt et Orientation diagnostique du scanner en Urgence

Dr Jacques FRANC, Radiologue Oréliance

Dr Olivier MONNET, Radiologue Oréliance

Oréliance

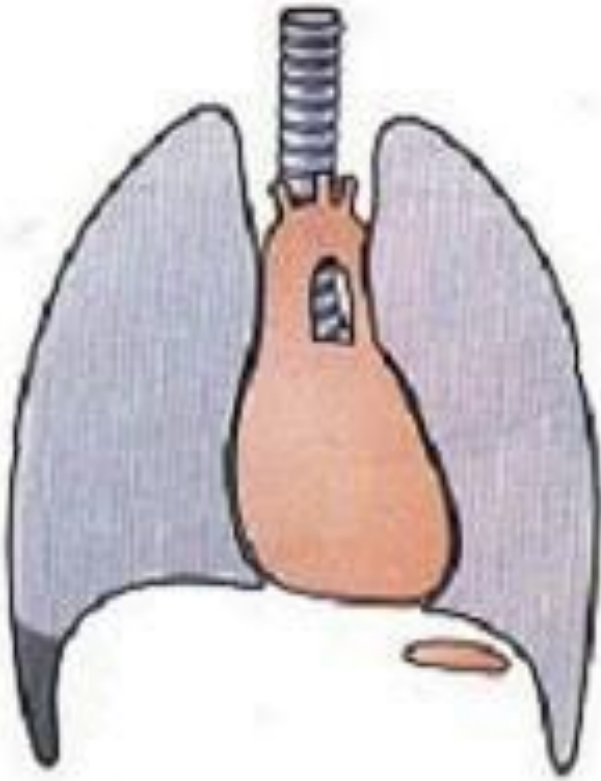
Exploration de la plèvre

- Radio standard
 - Scanner
 - Echographie
- I.R.M. et T.E.P.

Oreliance

Cliché Standard 1

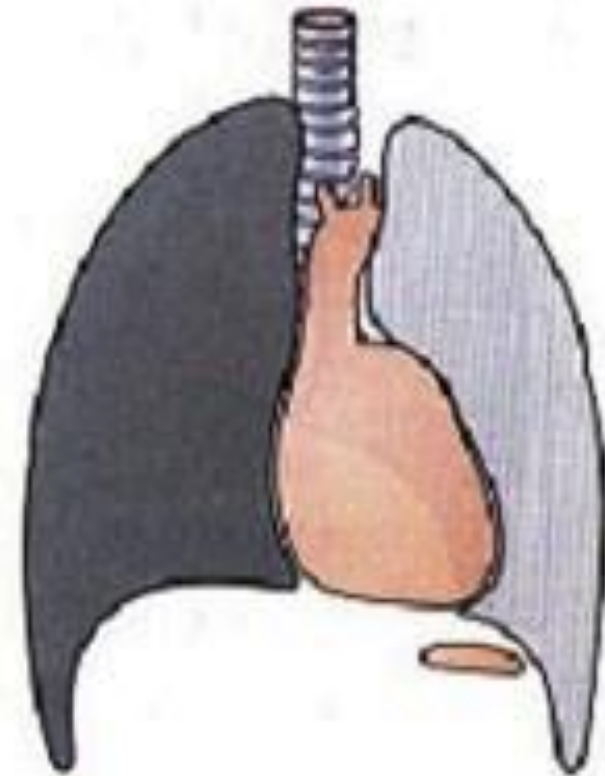
Faible 200-300 ml



Moyen 1-2 litres

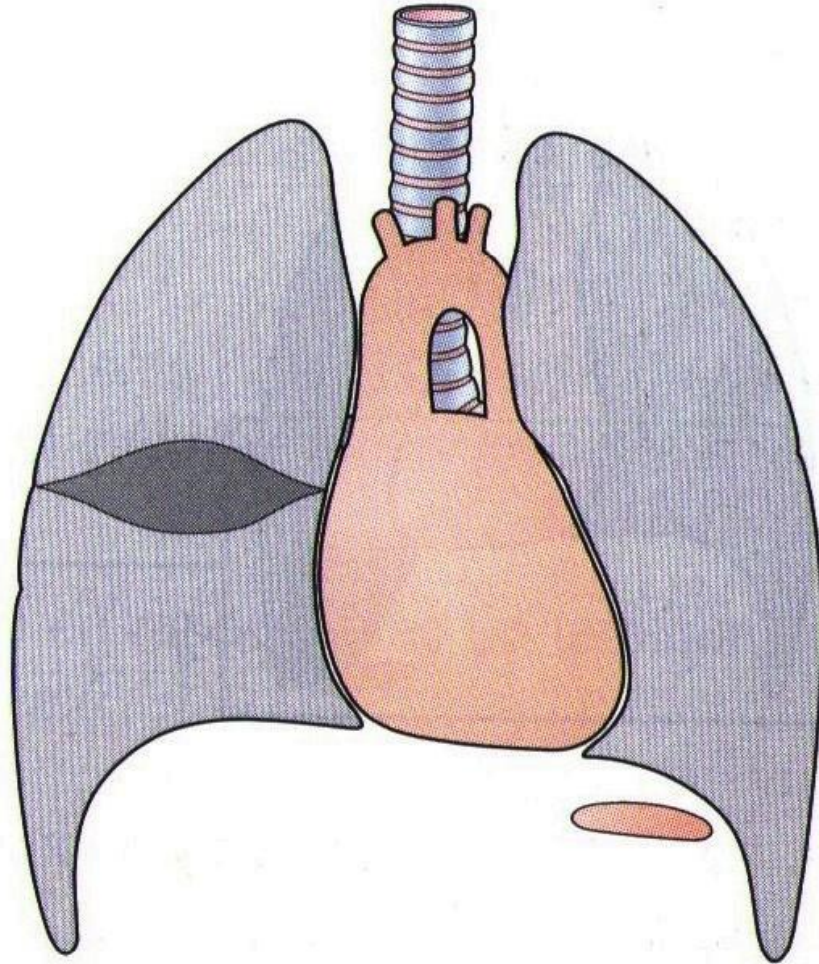


Fort 5 litres

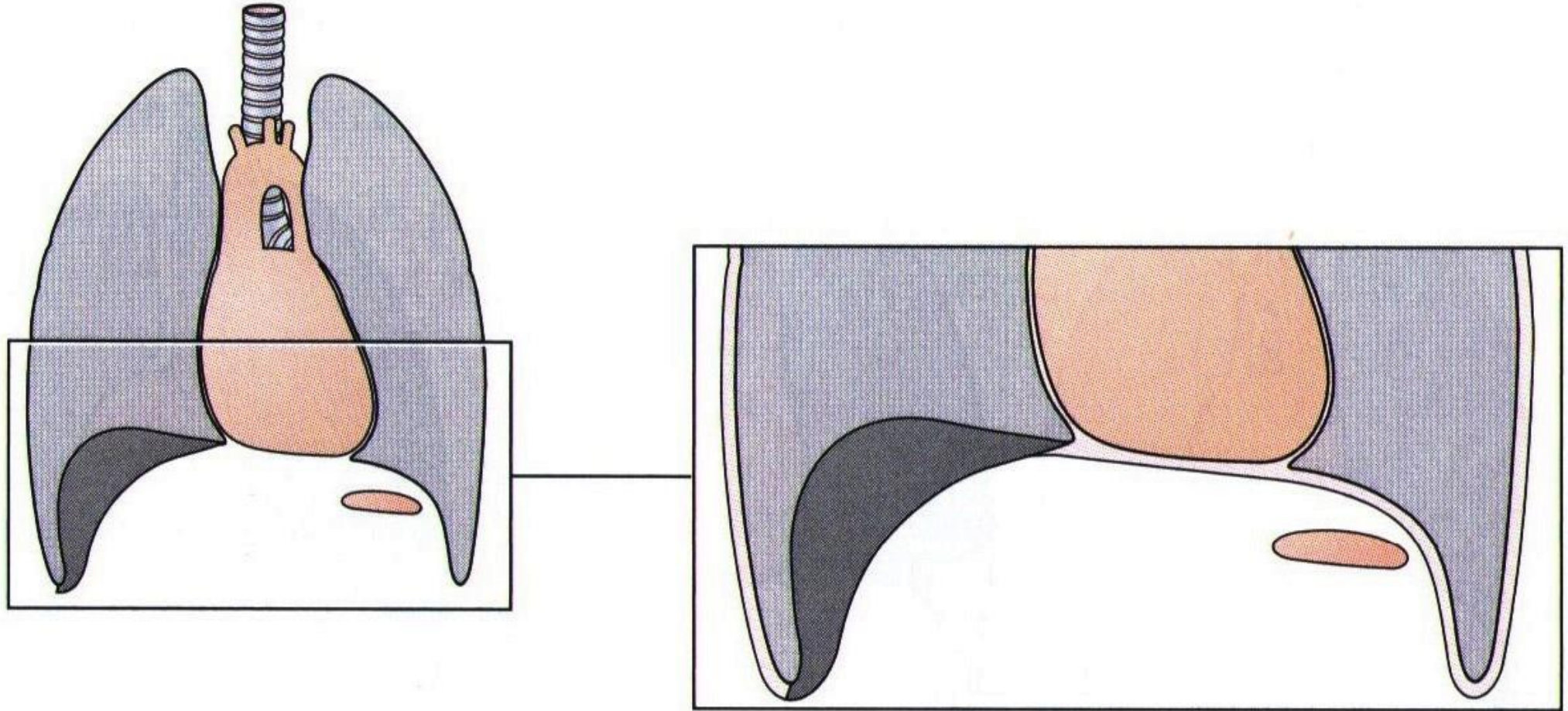


Oréalparce

Cliché Standard 2

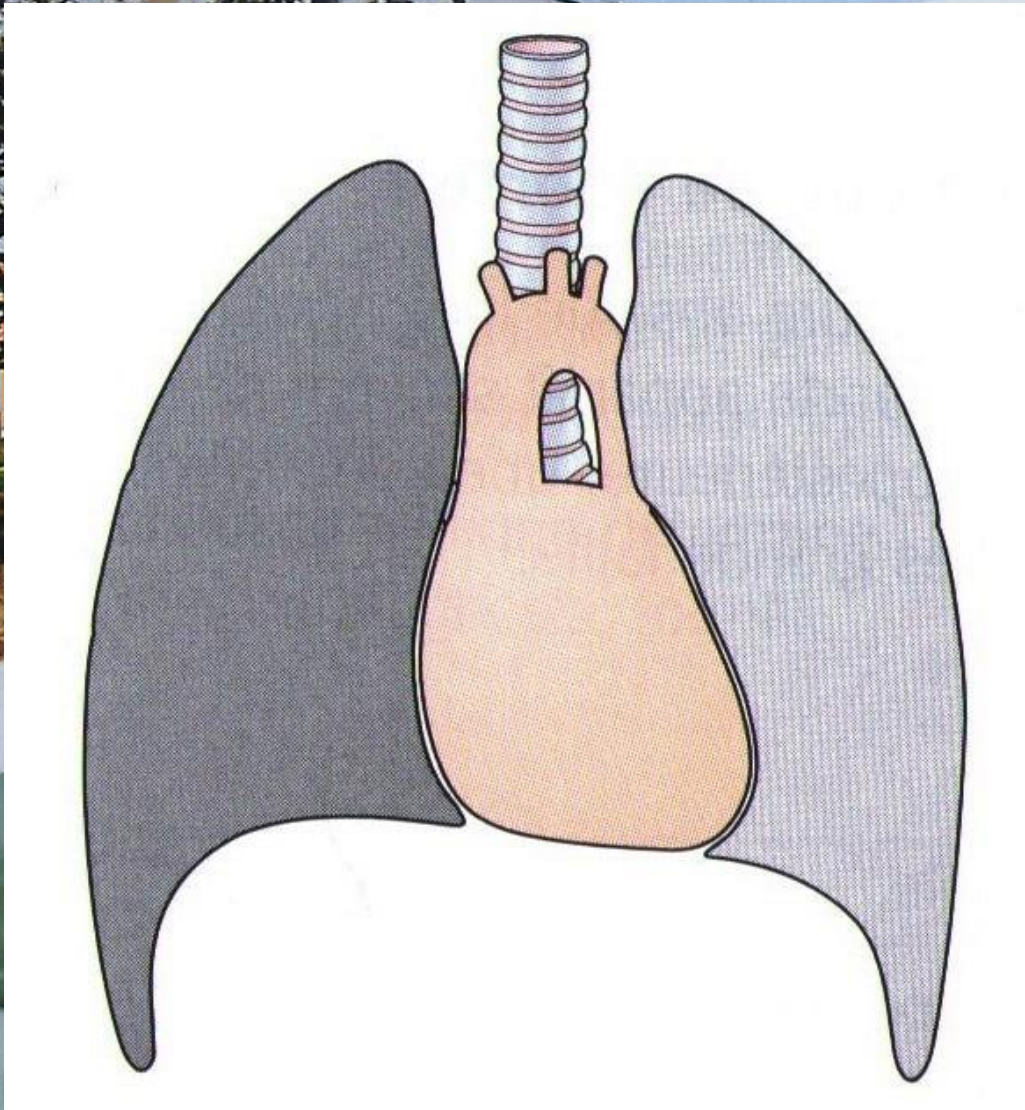


Cliché Standard 3

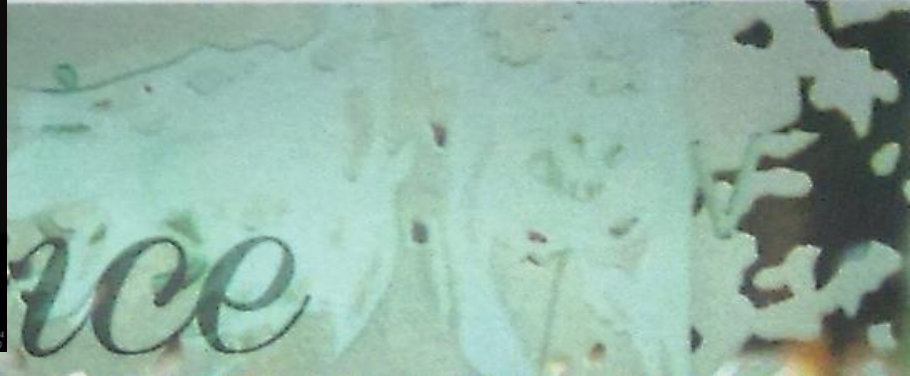
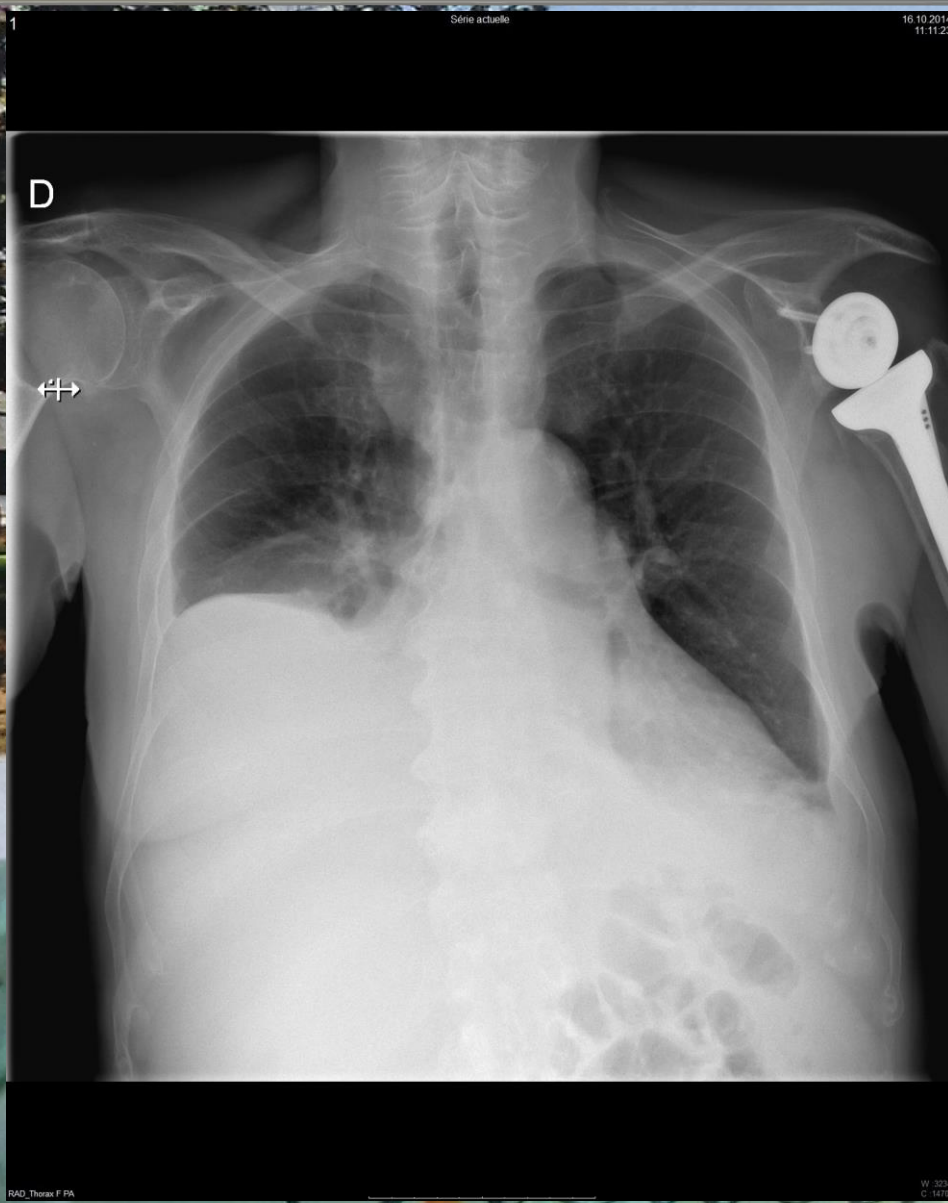


Orlando

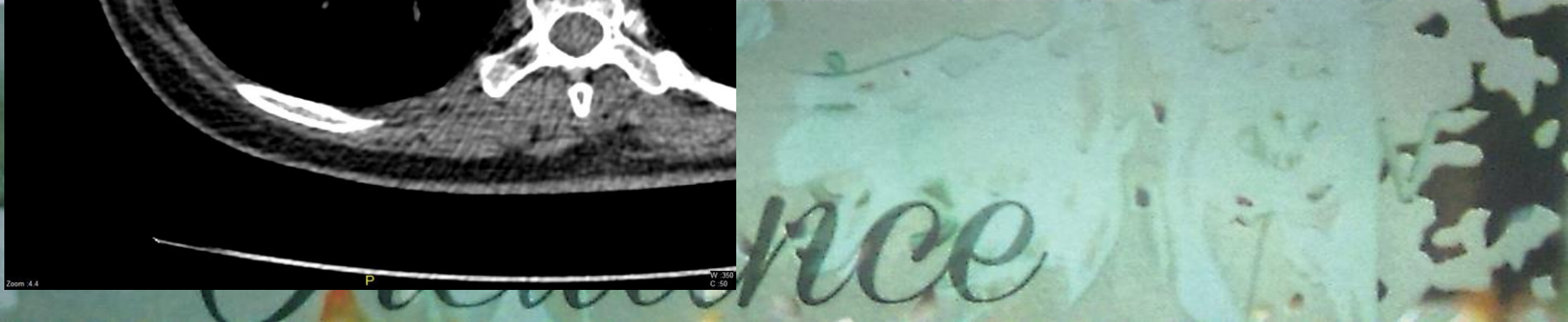
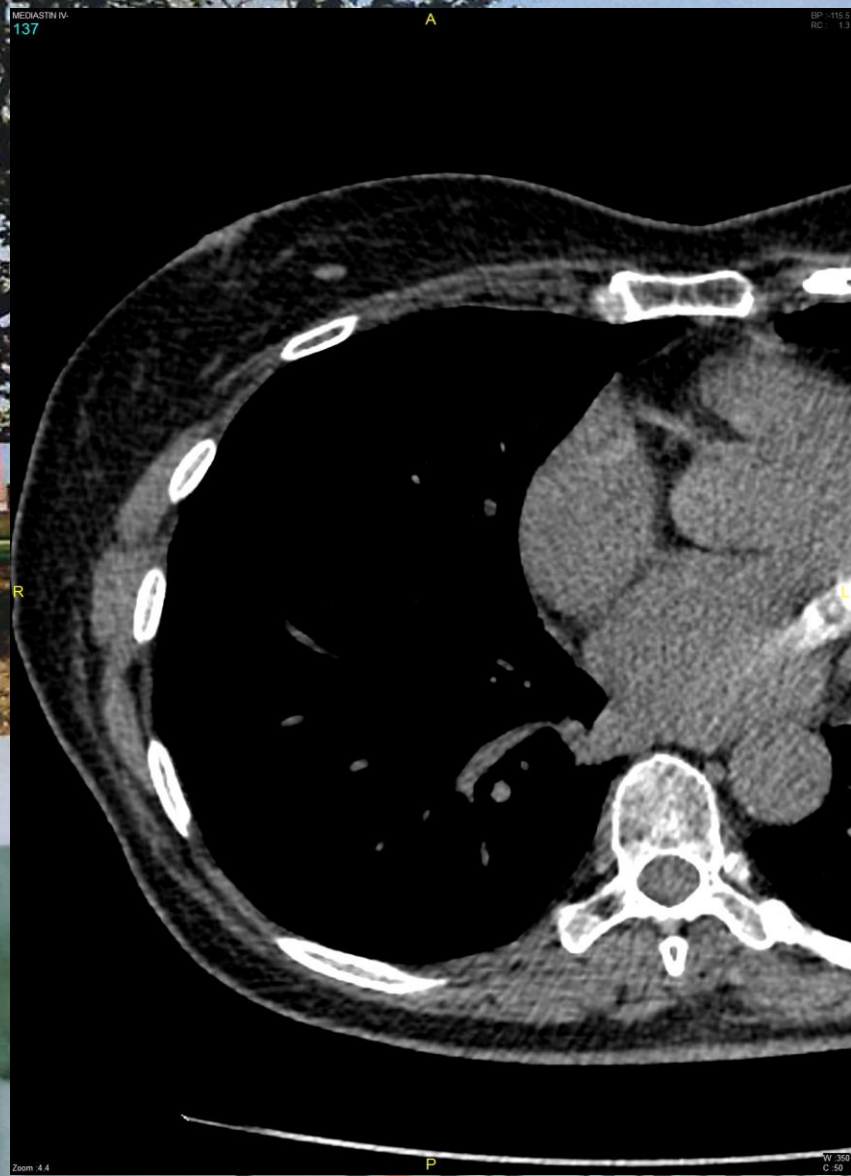
Cliché Standard 4



Cas Clinique N°1



Plèvre normale en TDM



Technique d'exploration

- **Espace pleural**

- Liquide
- Air
- Tumeur

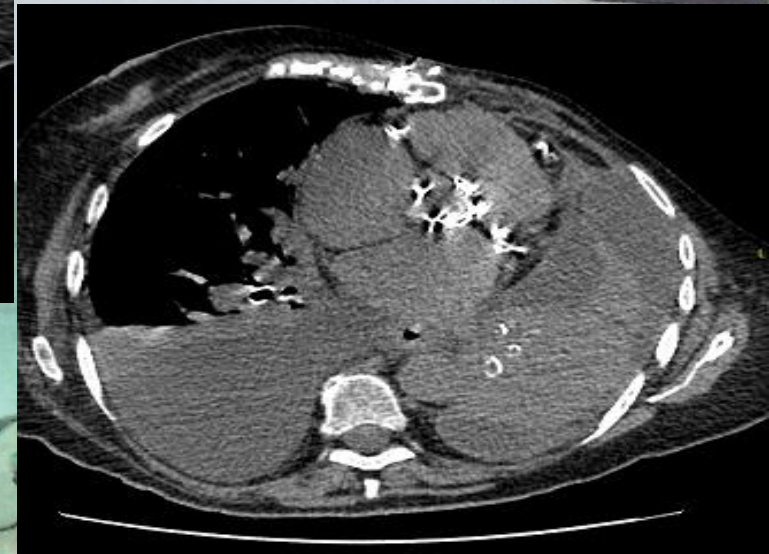
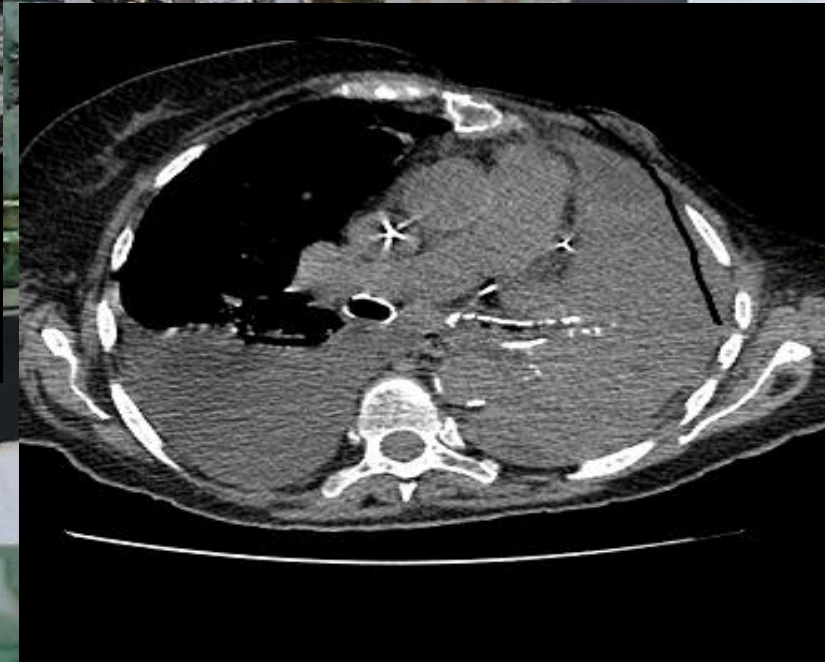
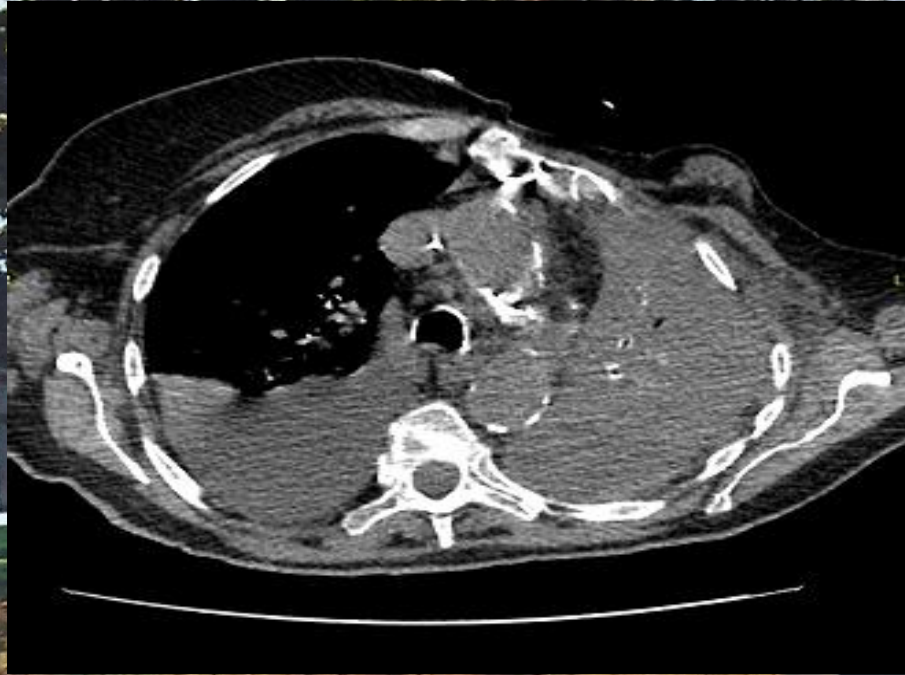
- **Technique**

- Apnée
- I.V. +

- **Feuillets pleuraux**

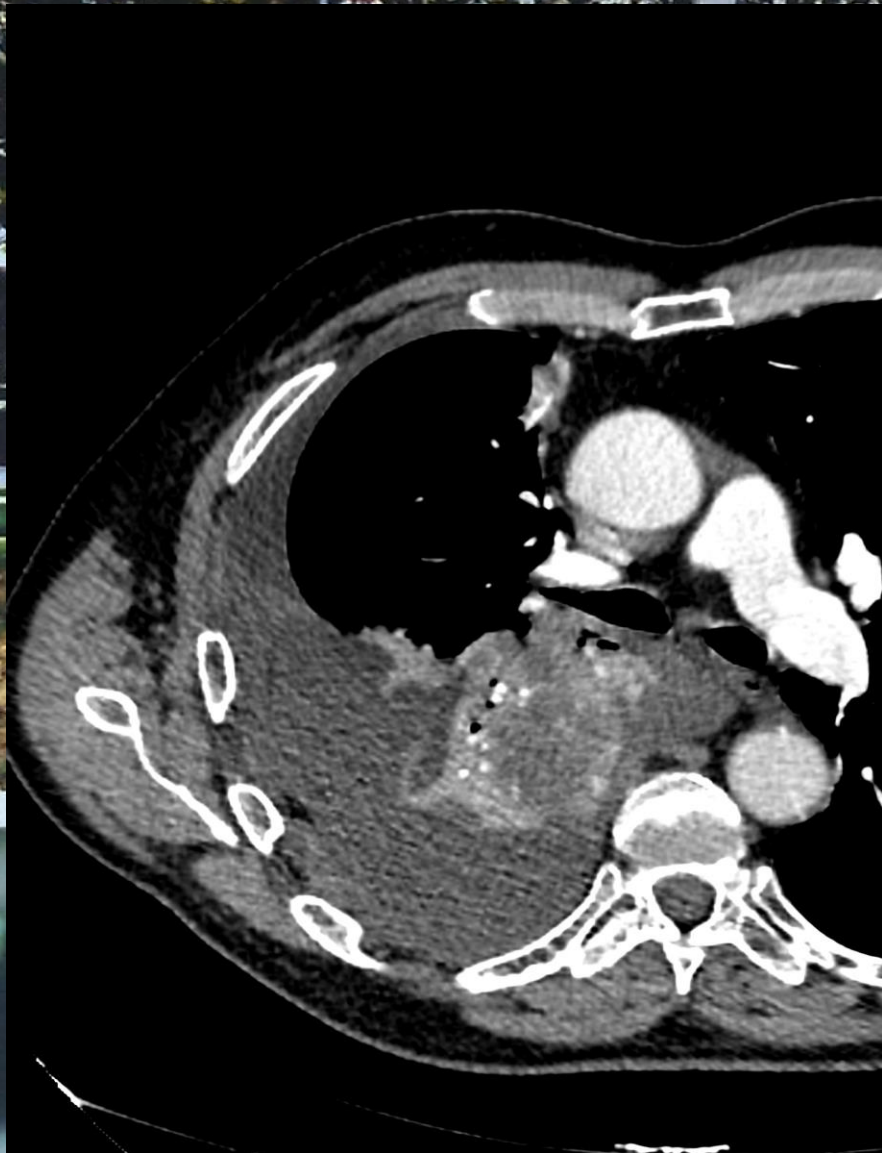
- Inflammation
- Fibrose, calcification
- Tumeur

Cas Clinique N°2: iv-

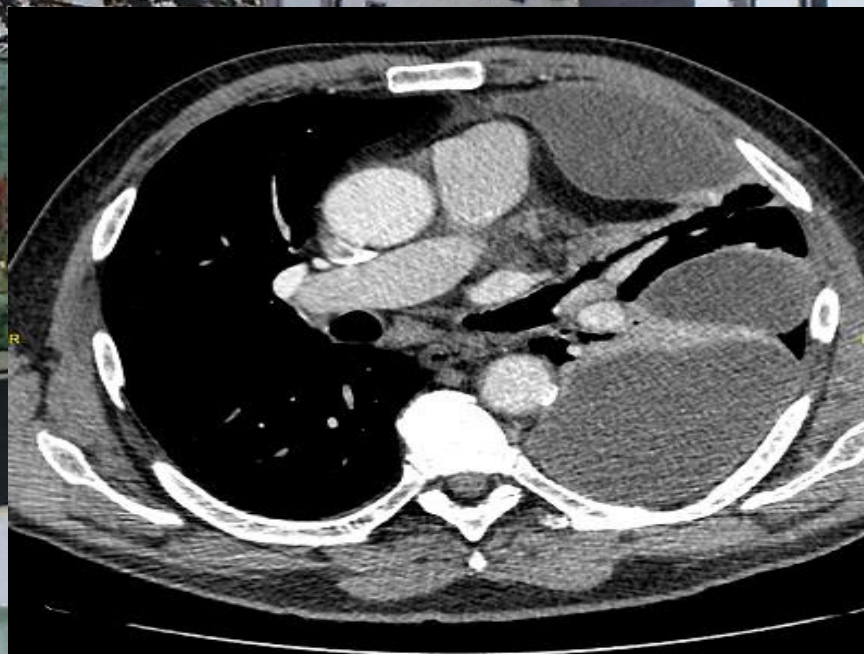


Oreliano

Cas Clinique N°3: iv+

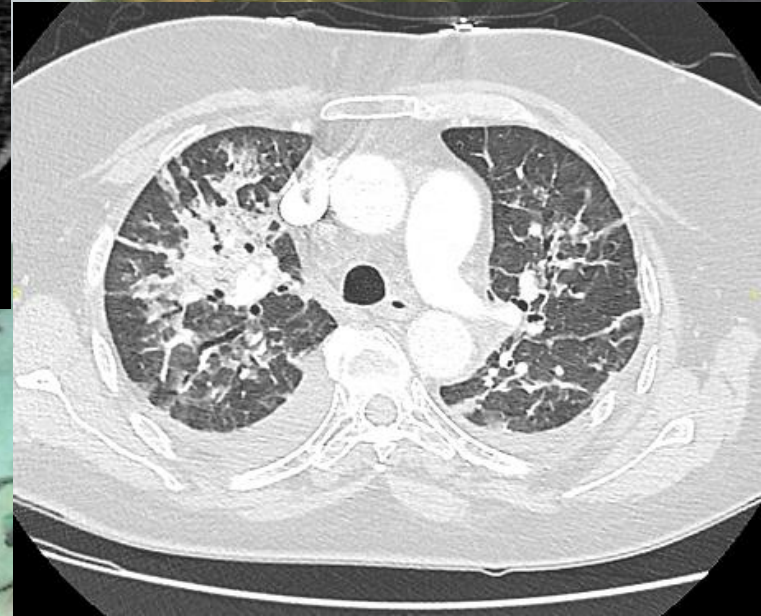
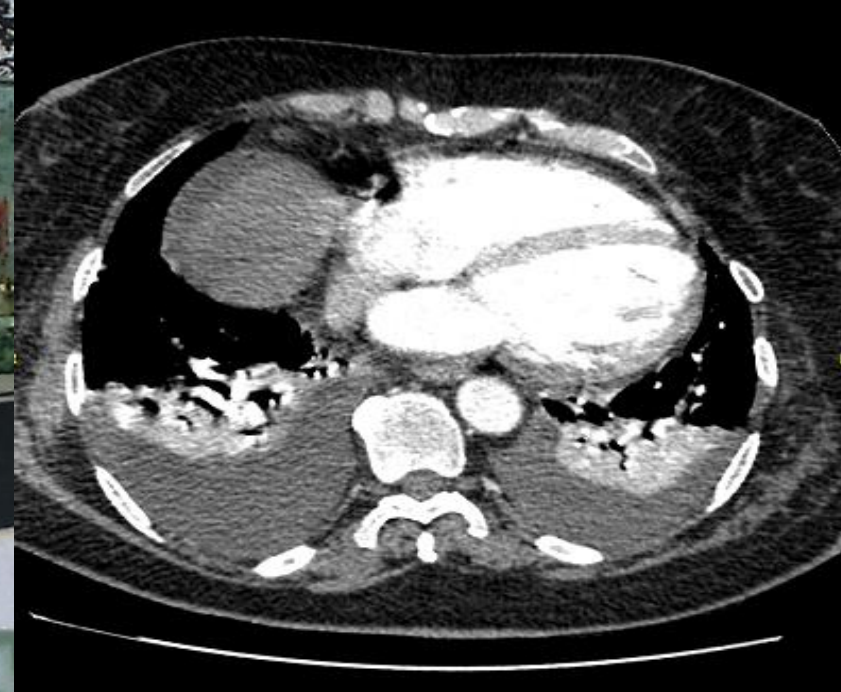
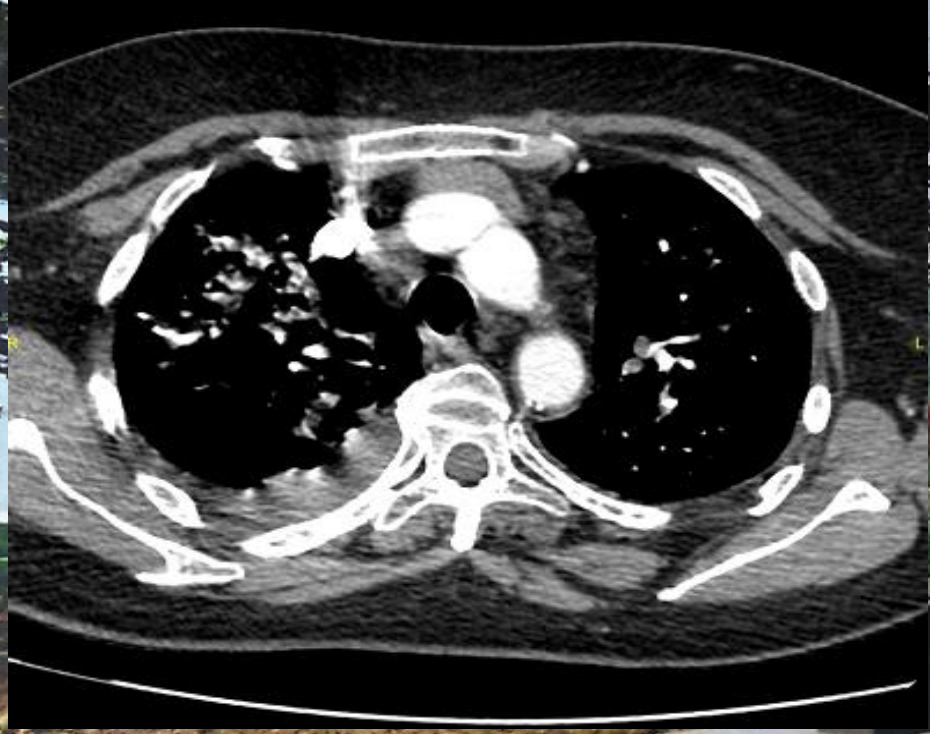


Cas Clinique N°4: dg+



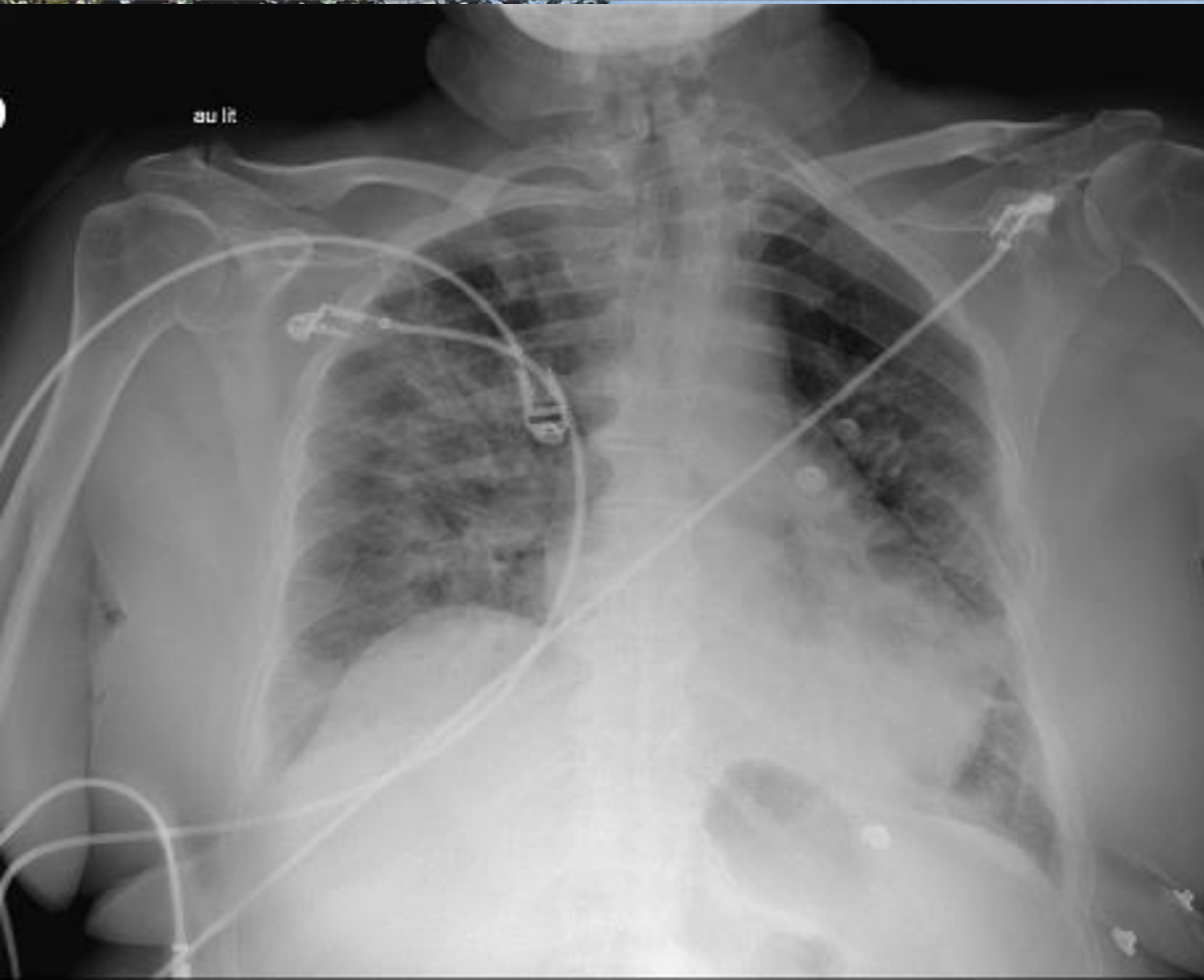
Oreliane

Cas Clinique N°5: discordance tdm/rd



Oreliano

Cas Clinique N°5 : discordance tdm/rd



Cas Clinique N°6:

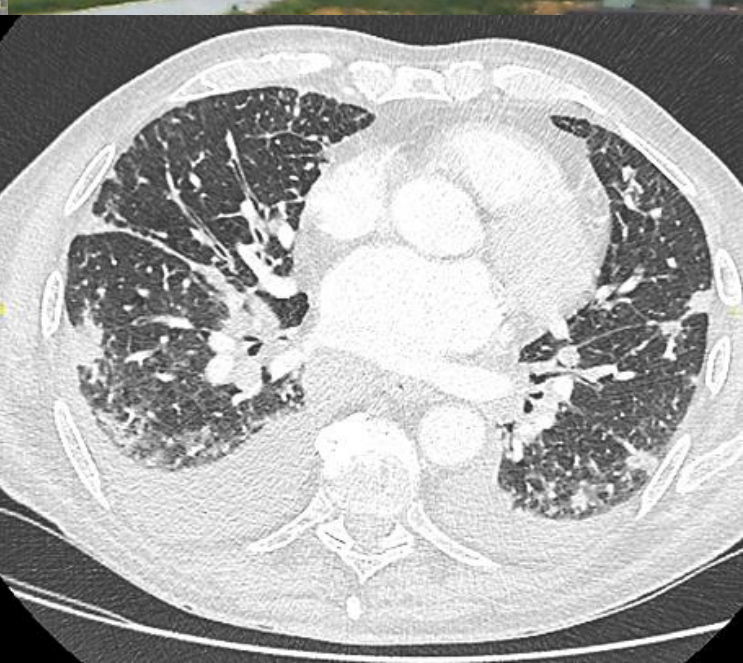
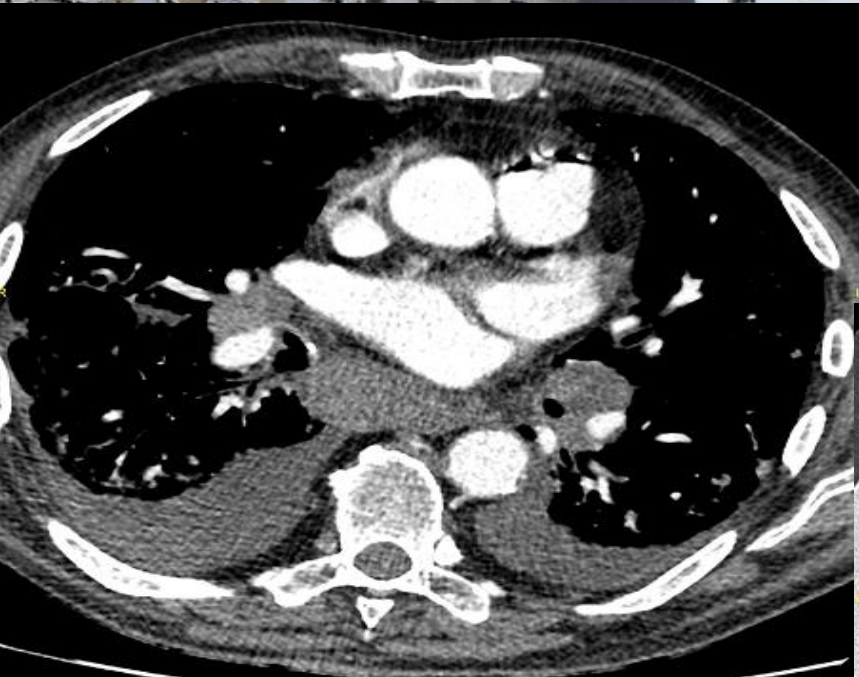
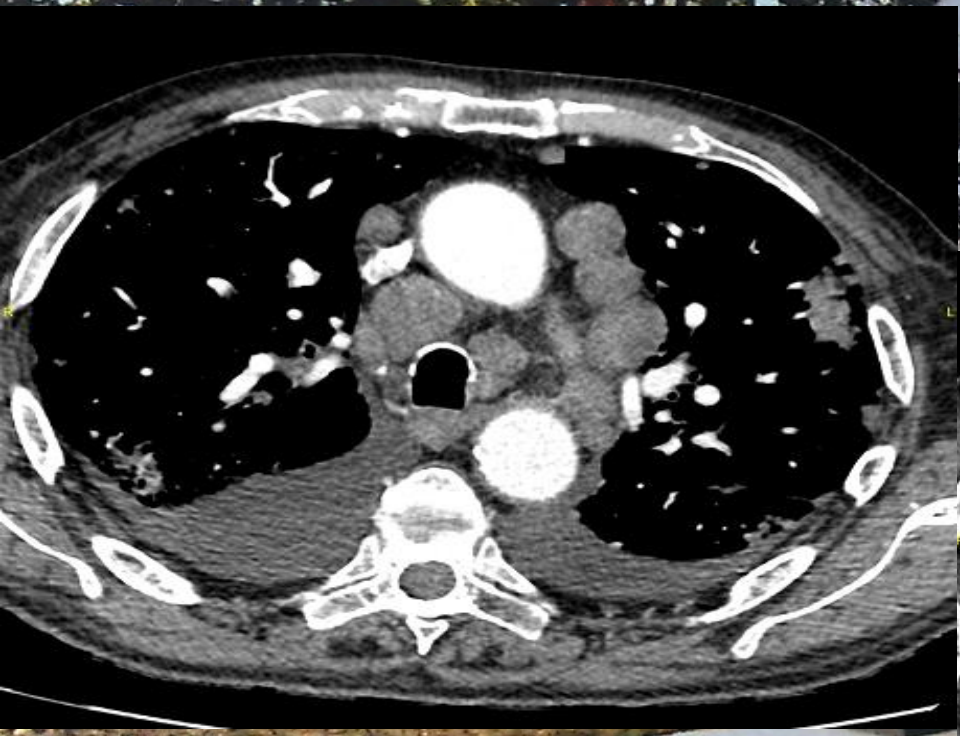


Cas Clinique N°7



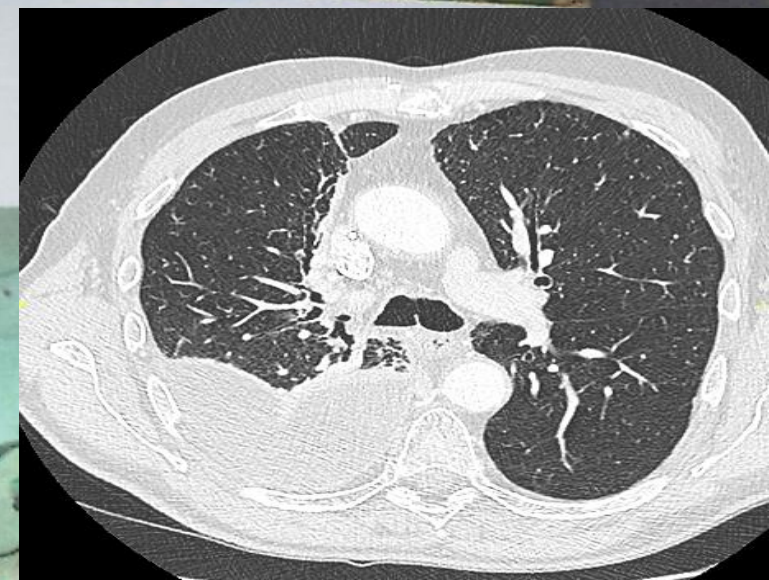
Oreliana

Cas Clinique N°8: clinique-



Oréliano

Cas Clinique N°9



Oreliano

Conclusion

-Cliché Standard: nécessaire

- Initial
- Suivi

-TDM: incontournable

- Plèvre
- Le reste